

Medium Type I Enclosures



Construction

- 16 or 14 gauge steel
- Mounting holes on back of enclosure

Finish

ANSI 61 gray polyester powder paint finish inside and out over phosphatized surfaces. Optional solid panels are white and optional perforated panels are gray.

Industry Standards

UL 50, File No. E27567, Type I
NEMA/EEMAC Type I
CSA, File No. 42184, Type I
IEC 60529, IP30

Accessories

See also *Accessories chapter*.

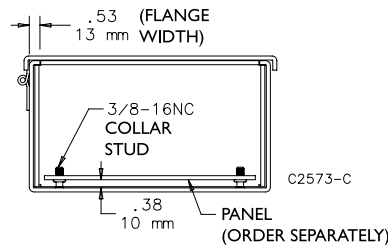
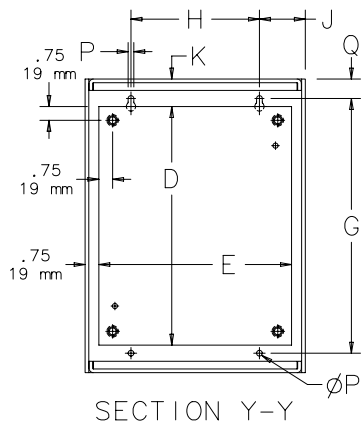
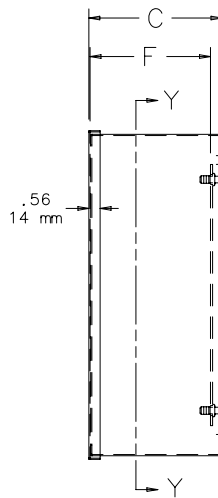
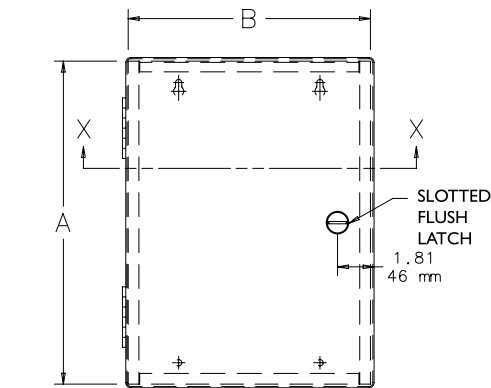
- Cylinder Lock Kit (AL12AR)
- Electric Heater
- Electrical Interlock
- Grounding Device
- Panels
- Rack Mounting Angle Kit
- "T" Handle Latch Kit (AL7A)
- Touch-Up Paint (ATPPY61)
- Window Kit

Application

Designed for use in control and instrumentation applications in areas which do not require oiltight and dusttight specifications.

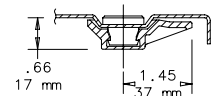
Features

- Doors have butt hinges
- Collar studs provided for mounting optional panel
- Slotted flush latches. Optional latches available.

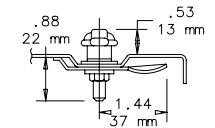
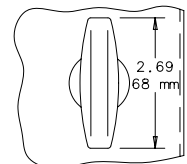


SECTION X-X

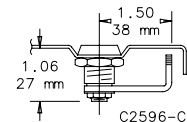
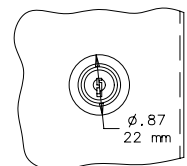
Standard Slotted
Flush Latch



"T" Handle
Latch Kit
AL7A (optional)



Cylinder Lock Kit
AL12AR (optional)



Medium Type I Enclosures

Standard Sizes Medium Type I Enclosures

Catalog Number	A x B x C in. (mm)	Panel Catalog Number	Perforated Panel Catalog Number	Panel Size D x E in. (mm)	Panel Ga.	G (in.)	G (mm)	H (in.)	H (mm)	J (in.)	J (mm)	Q (in.)	Q (mm)	P (in.)	P (mm)	F (in.)	F (mm)	K (in.)	K (mm)
A16N12ALP	16.00 x 12.00 x 6.62 (406 x 305 x 168)	A16N12MP	A16N12MPP	13.00 x 10.50 (330 x 267)	14	13.88	353	7.00	178	2.50	64	1.06	27	0.31	8	6.00	152	1.50	38
A16N16ALP	16.00 x 16.00 x 6.62 (406 x 406 x 168)	A16N16MP	A16N16MPP	13.00 x 14.50 (330 x 368)	14	13.88	353	11.00	279	2.50	64	1.06	27	0.31	8	6.00	152	1.50	38
A16N20ALP	16.00 x 20.00 x 6.62 (406 x 508 x 168)	A16N20MP	A16N20MPP	13.00 x 18.50 (330 x 470)	14	13.88	353	15.00	381	2.50	64	1.06	27	0.31	8	6.00	152	1.50	38
A20N16ALP	20.00 x 16.00 x 6.62 (508 x 406 x 168)	A20N16MP	A20N16MPP	17.00 x 14.50 (432 x 368)	14	17.88	454	11.00	279	2.50	64	1.06	27	0.31	8	6.00	152	1.50	38
A20N20ALP	20.00 x 20.00 x 6.62 (508 x 508 x 168)	A20N20MP	A20N20MPP	17.00 x 18.50 (432 x 470)	14	17.88	454	15.00	381	2.50	64	1.06	27	0.31	8	6.00	152	1.50	38
A24N16ALP	24.00 x 16.00 x 6.62 (610 x 406 x 168)	A24N16MP	A24N16MPP	21.00 x 14.50 (533 x 368)	14	21.88	556	11.00	279	2.50	64	1.06	27	0.31	8	6.00	152	1.50	38
A24N20ALP	24.00 x 20.00 x 6.62 (610 x 508 x 168)	A24N20MP	A24N20MPP	21.00 x 18.50 (533 x 470)	14	21.88	556	15.00	381	2.50	64	1.06	27	0.31	8	6.00	152	1.50	38
A24N24ALP	24.00 x 24.00 x 6.62 (610 x 610 x 168)	A24N24MP	A24N24MPP*	21.00 x 22.50 (533 x 572)	12	21.88	556	19.00	483	2.50	64	1.06	27	0.31	8	6.00	152	1.50	38
A30N24ALP	30.00 x 24.00 x 6.62 (762 x 610 x 168)	A30N24MP	A30N24MPP*	26.00 x 22.50 (660 x 572)	12	27.50	699	16.75	425	3.62	92	1.25	32	0.44	11	6.00	152	2.00	51
A36N24ALP	36.00 x 24.00 x 6.62 (914 x 610 x 168)	A36N24MP	A36N24MPP*	32.00 x 22.50 (813 x 572)	12	33.50	851	16.75	425	3.62	92	1.25	32	0.44	11	6.00	152	2.00	51
A36N30ALP	36.00 x 30.00 x 6.62 (914 x 762 x 168)	A36N30MP	A36N30MPP*	32.00 x 28.50 (813 x 724)	12	33.50	851	22.75	578	3.62	92	1.25	32	0.44	11	6.00	152	2.00	51
A16N12BLP	16.00 x 12.00 x 8.62 (406 x 305 x 219)	A16N12MP	A16N12MPP	13.00 x 10.50 (330 x 267)	14	13.88	353	7.00	178	2.50	64	1.06	27	0.31	8	8.00	203	1.50	38
A20N12BLP	20.00 x 12.00 x 8.62 (508 x 305 x 219)	A20N12MP	A20N12MPP	17.00 x 10.50 (432 x 267)	14	17.88	454	7.00	178	2.50	64	1.06	27	0.31	8	8.00	203	1.50	38
A20N16BLP	20.00 x 16.00 x 8.62 (508 x 406 x 219)	A20N16MP	A20N16MPP	17.00 x 14.50 (432 x 368)	14	17.88	454	11.00	279	2.50	64	1.06	27	0.31	8	8.00	203	1.50	38
A20N20BLP	20.00 x 20.00 x 8.62 (508 x 508 x 219)	A20N20MP	A20N20MPP	17.00 x 18.50 (432 x 470)	14	17.88	454	15.00	381	2.50	64	1.06	27	0.31	8	8.00	203	1.50	38
A24N20BLP	24.00 x 20.00 x 8.62 (610 x 508 x 219)	A24N20MP	A24N20MPP	21.00 x 18.50 (533 x 470)	14	21.88	556	15.00	381	2.50	64	1.06	27	0.31	8	8.00	203	1.50	38
A24N24BLP	24.00 x 24.00 x 8.62 (610 x 610 x 219)	A24N24MP	A24N24MPP*	21.00 x 22.50 (533 x 572)	12	21.88	556	19.00	483	2.50	64	1.06	27	0.31	8	8.00	203	1.50	38
A30N20BLP	30.00 x 20.00 x 8.62 (762 x 508 x 219)	A30N20MP	A30N20MPP*	26.00 x 18.50 (660 x 470)	12	27.50	699	15.00	381	2.50	64	1.25	32	0.44	11	8.00	203	2.00	51
A30N24BLP	30.00 x 24.00 x 8.62 (762 x 610 x 219)	A30N24MP	A30N24MPP*	26.00 x 22.50 (660 x 572)	12	27.50	699	16.75	425	3.62	92	1.25	32	0.44	11	8.00	203	2.00	51
A30N30BLP	30.00 x 30.00 x 8.62 (762 x 762 x 219)	A30N30MP	A30N30MPP*	26.00 x 28.50 (660 x 724)	12	27.50	699	22.75	578	3.62	92	1.25	32	0.44	11	8.00	203	2.00	51
A36N24BLP	36.00 x 24.00 x 8.62 (914 x 610 x 219)	A36N24MP	A36N24MPP*	32.00 x 22.50 (813 x 572)	12	33.50	851	16.75	425	3.62	92	1.25	32	0.44	11	8.00	203	2.00	51
A36N30BLP	36.00 x 30.00 x 8.62 (914 x 762 x 219)	A36N30MP	A36N30MPP*	32.00 x 28.50 (813 x 724)	12	33.50	851	22.75	578	3.62	92	1.25	32	0.44	11	8.00	203	2.00	51
A18N18CLP	18.00 x 18.00 x 10.62 (441 x 441 x 270)	A18N18MP	A18N18MPP	15.00 x 16.50 (381 x 419)	14	15.88	403	13.00	330	2.50	64	1.06	27	0.31	8	10.00	254	1.50	38
A24N20CLP	24.00 x 20.00 x 10.62 (610 x 508 x 270)	A24N20MP	A24N20MPP	21.00 x 18.50 (533 x 470)	14	21.88	556	15.00	381	2.50	64	1.06	27	0.31	8	10.00	254	1.50	38
A30N24CLP	30.00 x 24.00 x 10.62 (762 x 610 x 270)	A30N24MP	A30N24MPP	21.00 x 22.50 (533 x 572)	12	27.50	699	16.75	425	3.62	92	1.25	32	0.44	11	10.00	254	2.00	51
A24N24DLP	24.00 x 24.00 x 12.62 (610 x 610 x 321)	A24N24MP	A24N24MPP*	21.00 x 22.50 (533 x 572)	12	21.88	556	19.00	483	2.50	64	1.06	27	0.31	8	12.00	305	1.50	38
A30N24DLP	30.00 x 24.00 x 12.62 (762 x 610 x 321)	A30N24MP	A30N24MPP*	26.00 x 22.50 (660 x 724)	12	27.50	699	16.75	425	3.62	92	1.25	32	0.44	11	12.00	305	2.00	51
A36N30DLP	36.00 x 30.00 x 12.62 (914 x 762 x 321)	A36N30MP	A36N30MPP*	32.00 x 28.50 (813 x 724)	12	33.50	851	22.75	578	3.62	92	1.25	32	0.44	11	12.00	305	2.00	51

Purchase panels separately.

* Flanged on all four sides.

Commercial Boxes and Enclosures